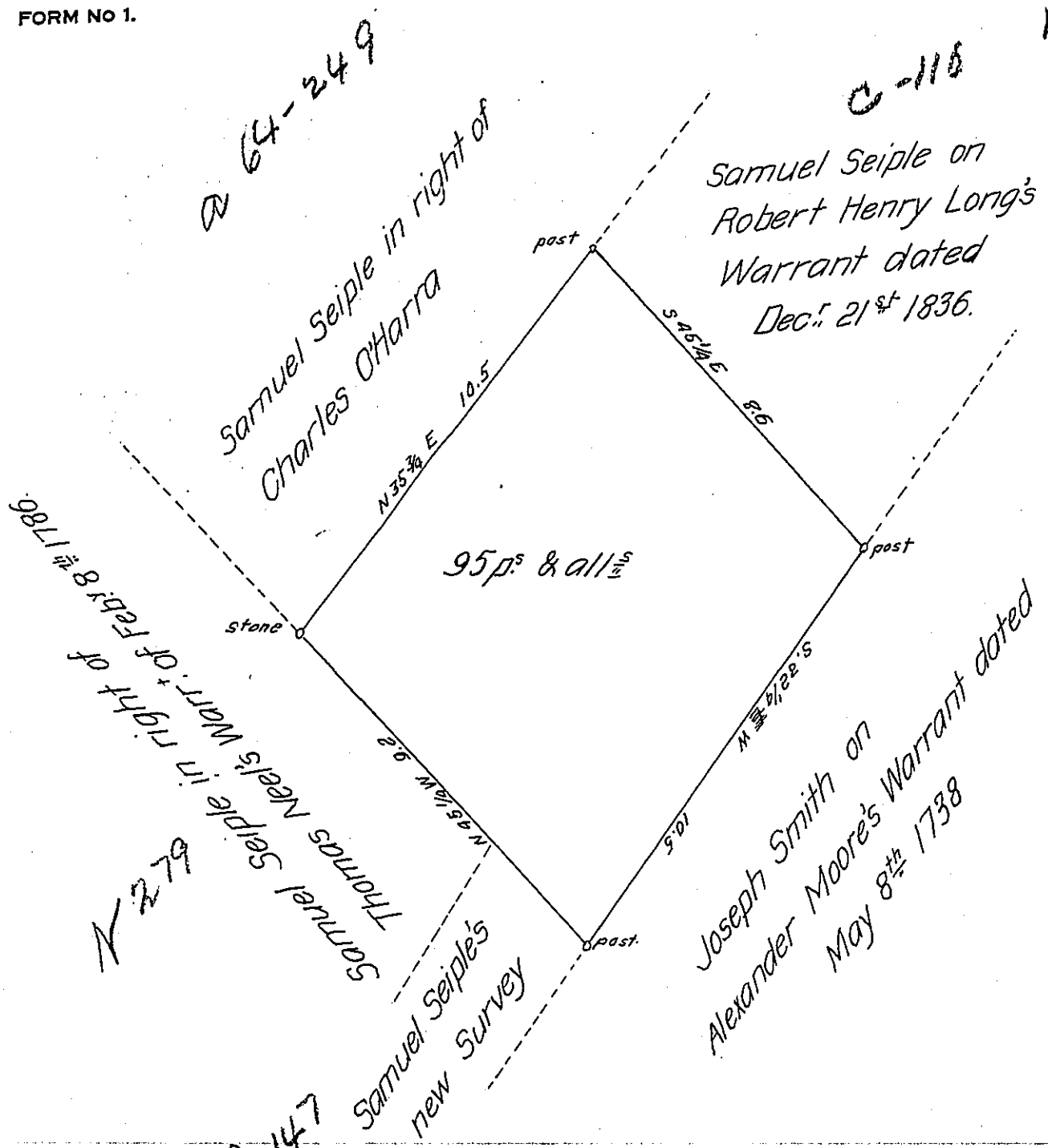


113



B9147

(Warrant for 1A's 21^{ps})

The above Draught represents a piece of land in Drumore township, Lancaster County, containing 95 perches and the usual Allowance of Six per cent for Roads &c. Surveyed February 14th 1860, in pursuance of a Warrant dated January 22nd A.D. 1859, granted to Samuel Seiple.

To John Rowe Esq.

John C. Lewis Surveyor for

Surveyor General of Pa.

Lanc. Co.

IN TESTIMONY that the above is a copy of the original remaining on file in the Department of Internal Affairs of Pennsylvania, made conformably to an Act of Assembly approved the 16th day of February, 1833, I have hereunto set my Hand and caused the Seal of said Department to be affixed at Harrisburg, this Eleventh day of February 1907

Geo. B. Brown
Secretary of Internal Affairs.